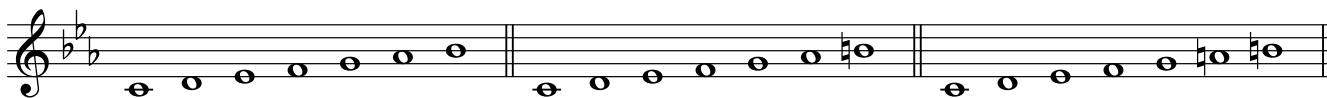


# Function of Diatonic Chord(Minor)

Key of C Minor



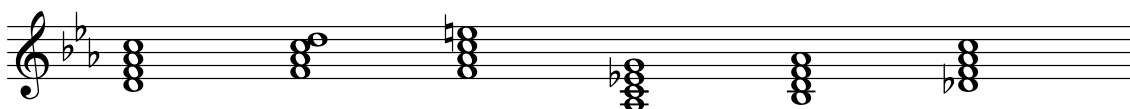
Tonic Chord

Cm6 Cm(Maj7) Cm7 Am7(b5) EbMaj7 Eb+(Maj7)



Sub Dominant Chord

Dm7(b5) Fm6 Fm(Maj7) AbMaj7 Bb7 DbMaj7

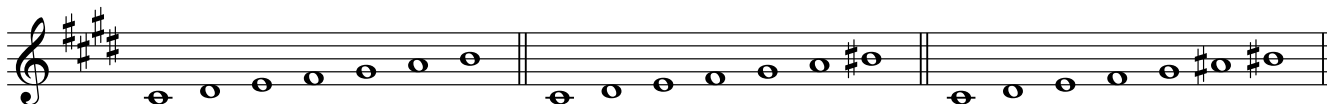


Dominant Chord

G7(b9) Bdim7

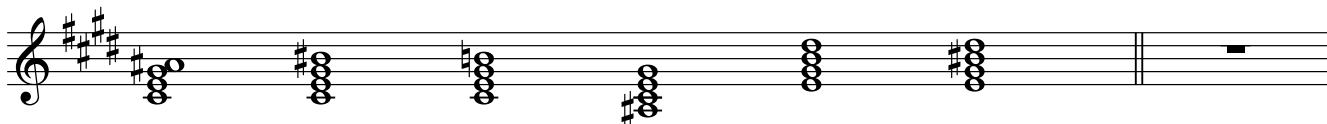


Key of C# Minor



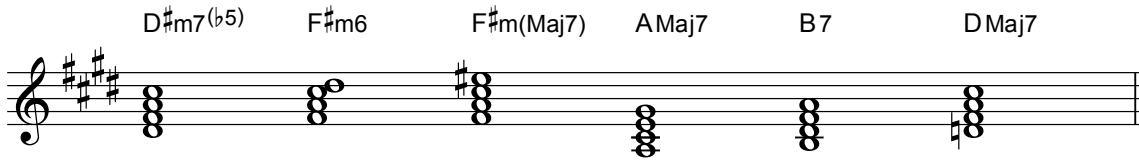
Tonic Chord

C#m6 C#m(Maj7) C#m7 A#m7(b5) EMaj7 E+(Maj7)



Sub Dominant Chord

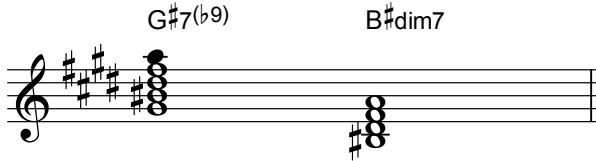
D#m7(b5) F#m6 F#m(Maj7) AMaj7 B7 DMaj7



A musical staff in treble clef with a key signature of two sharps (D major). It contains six chord symbols above a series of chord diagrams: D#m7(b5), F#m6, F#m(Maj7), AMaj7, B7, and DMaj7.

Dominant Chord

G#7(b9) B#dim7



A musical staff in treble clef with a key signature of two sharps (D major). It contains two chord symbols above a series of chord diagrams: G#7(b9) and B#dim7.

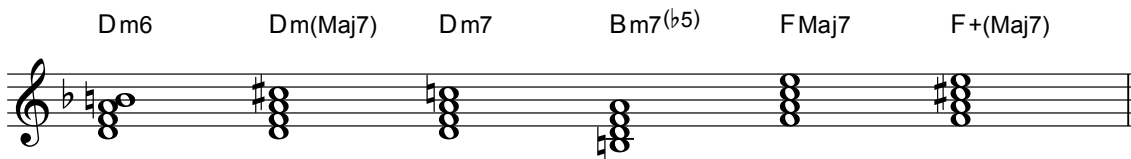
Key of D Minor



A musical staff in treble clef with a key signature of one flat (D minor). It contains a scale of whole notes: D, E, F, G, A, B, C, D, E, F, G, A, B, C, D.

Tonic Chord

Dm6 Dm(Maj7) Dm7 Bm7(b5) FMaj7 F+(Maj7)



A musical staff in treble clef with a key signature of one flat (D minor). It contains six chord symbols above a series of chord diagrams: Dm6, Dm(Maj7), Dm7, Bm7(b5), FMaj7, and F+(Maj7).

Sub Dominant Chord

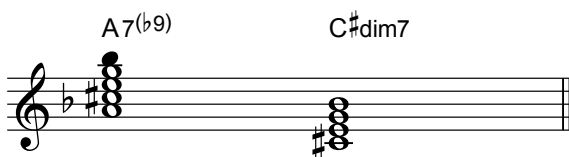
Em7(b5) Gm6 Gm(Maj7) BbMaj7 C7 EbMaj7



A musical staff in treble clef with a key signature of one flat (D minor). It contains six chord symbols above a series of chord diagrams: Em7(b5), Gm6, Gm(Maj7), BbMaj7, C7, and EbMaj7.

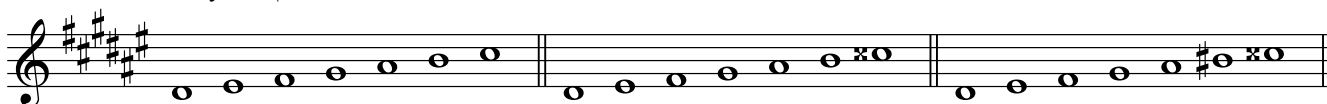
Dominant Chord

A7(b9) C#dim7



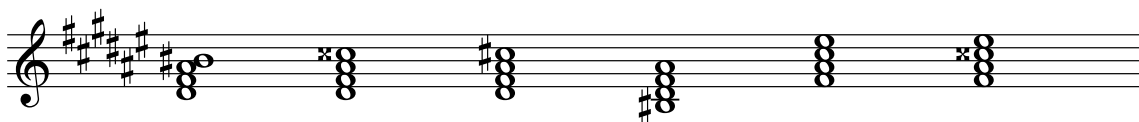
A musical staff in treble clef with a key signature of one flat (D minor). It contains two chord symbols above a series of chord diagrams: A7(b9) and C#dim7.

Key of D# Minor



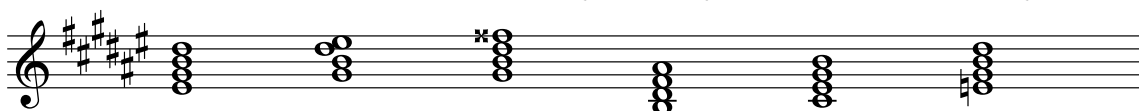
Tonic Chord

D#m6    D#m(Maj7)    D#m7    B#m7(b5)    F#Maj7    F#+(Maj7)



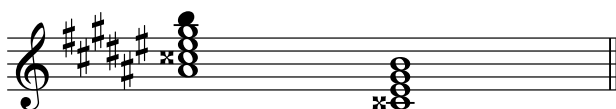
Sub Dominant Chord

E#m7(b5)    G#m6    G#m(Maj7)    B Maj7    C#7    E Maj7



Dominant Chord

A#7(b9)    C\*dim7

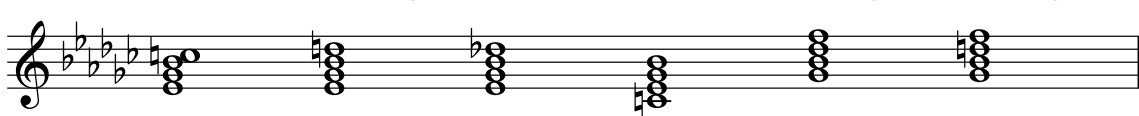


Key of Eb Minor



Tonic Chord

Ebm6    Ebm(Maj7)    Ebm7    Cm7(b5)    GbMaj7    Gb+(Maj7)



Sub Dominant Chord

Fm7(b5)    A<sup>b</sup>m6    A<sup>b</sup>m(Maj7)    C<sup>b</sup>Maj7    D<sup>b</sup>7    F<sup>b</sup>Maj7

Dominant Chord

B<sup>b</sup>7(b9)    D dim7

Key of E Minor

Tonic Chord

Em6    Em(Maj7)    Em7    C<sup>#</sup>m7(b5)    GMaj7    G+(Maj7)

Sub Dominant Chord

F<sup>#</sup>m7(b5)    Am6    Am(Maj7)    CMaj7    D7    FMaj7

Dominant Chord

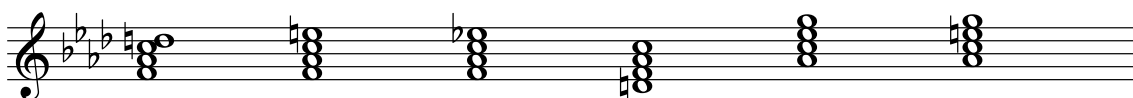
B7(b9)    D<sup>#</sup>dim7

Key of F Minor



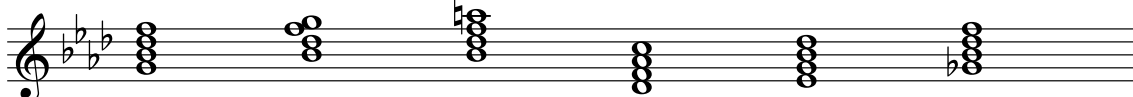
Tonic Chord

F m6      F m(Maj7)      F m7      D m7(b5)      AbMaj7      Ab+(Maj7)



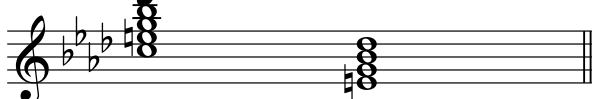
Sub Dominant Chord

G m7(b5)      Bbm6      Bbm(Maj7)      DbMaj7      Eb7      GbMaj7



Dominant Chord

C7(b9)      E dim7



Key of F# Minor



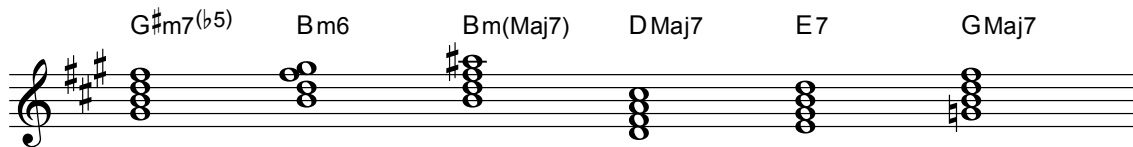
Tonic Chord

F#m6      F#m(Maj7)      F#m7      D#m7(b5)      AMaj7      A+(Maj7)



Sub Dominant Chord

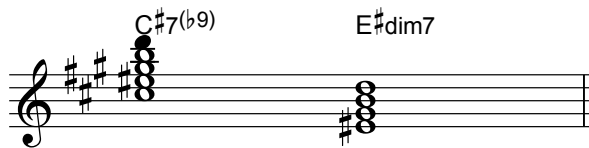
G#m7(b5) Bm6 Bm(Maj7) DMaj7 E7 GMaj7



A musical staff in G major showing six chords: G#m7(b5), Bm6, Bm(Maj7), DMaj7, E7, and GMaj7. Each chord is represented by a cluster of notes on a five-line staff.

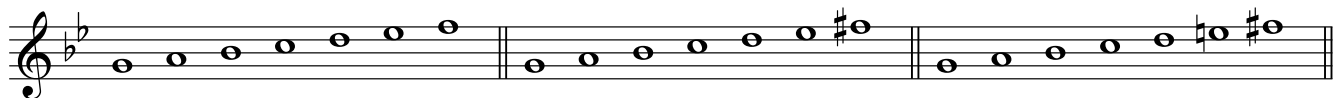
Dominant Chord

C#7(b9) E#dim7



A musical staff in G major showing two chords: C#7(b9) and E#dim7. Each chord is represented by a cluster of notes on a five-line staff.

Key of G Minor



A musical staff showing the key signature of G minor, which consists of two flats (Bb and Eb).

Tonic Chord

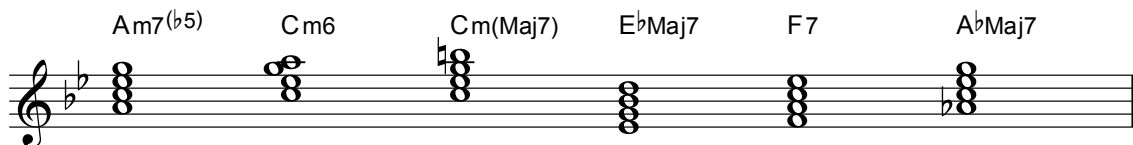
Gm6 Gm(Maj7) Gm7 Em7(b5) BbMaj7 Bb+(Maj7)



A musical staff in G minor showing six chords: Gm6, Gm(Maj7), Gm7, Em7(b5), BbMaj7, and Bb+(Maj7). Each chord is represented by a cluster of notes on a five-line staff.

Sub Dominant Chord

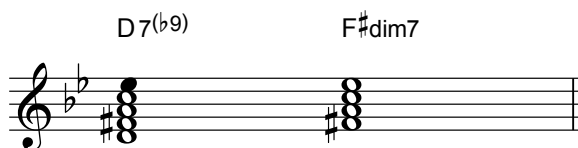
Am7(b5) Cm6 Cm(Maj7) EbMaj7 F7 AbMaj7



A musical staff in G minor showing six chords: Am7(b5), Cm6, Cm(Maj7), EbMaj7, F7, and AbMaj7. Each chord is represented by a cluster of notes on a five-line staff.

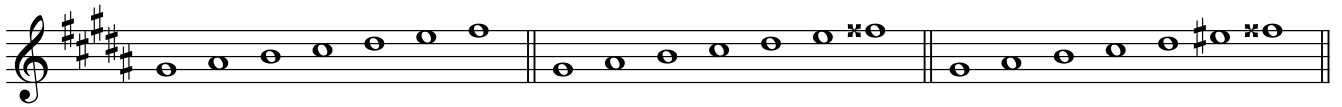
Dominant Chord

D7(b9) F#dim7



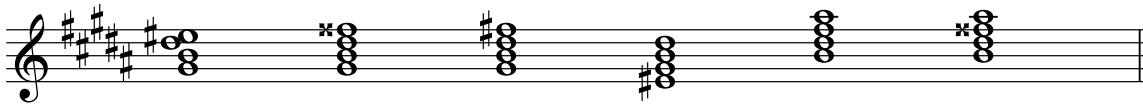
A musical staff in G minor showing two chords: D7(b9) and F#dim7. Each chord is represented by a cluster of notes on a five-line staff.

Key of G# Minor



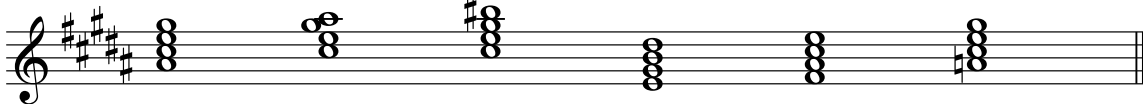
Tonic Chord

G#m6    G#m(Maj7)    G#m7    E#m7(b5)    B Maj7    B+(Maj7)



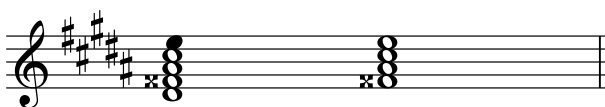
Sub Dominant Chord

A#m7(b5)    C#m6    C#m(Maj7)    E Maj7    F#7    A Maj7



Dominant Chord

D#7(b9)    F#dim7

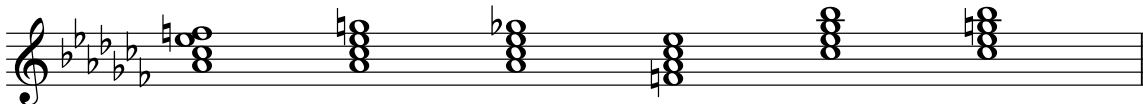


Key of A# Minor



Tonic Chord

A#m6    A#m(Maj7)    A#m7    Fm7(b5)    C# Maj7    C#+(Maj7)



Sub Dominant Chord

B<sup>b</sup>m7(b<sup>5</sup>)    D<sup>b</sup>m6    D<sup>b</sup>m(Maj7)    F<sup>b</sup>Maj7    G<sup>b</sup>7    B<sup>b</sup>Maj7

Dominant Chord

E<sup>b</sup>7(b<sup>9</sup>)    Gdim7

Key of A Minor

Tonic Chord

A<sup>m</sup>6    A<sup>m</sup>(Maj7)    A<sup>m</sup>7    F<sup>#</sup>m7(b<sup>5</sup>)    C<sup>Maj</sup>7    C<sup>+</sup>(Maj7)

Sub Dominant Chord

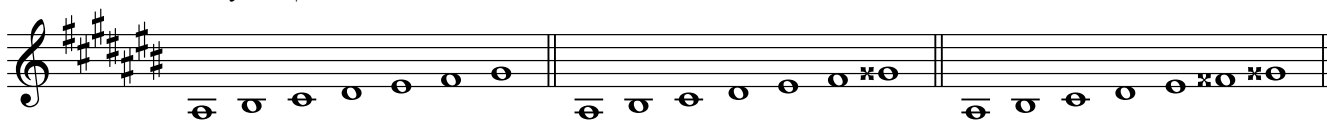
B<sup>m</sup>7(b<sup>5</sup>)    D<sup>m</sup>6    D<sup>m</sup>(Maj7)    F<sup>Maj</sup>7    G7    B<sup>b</sup>Maj7

Dominant Chord

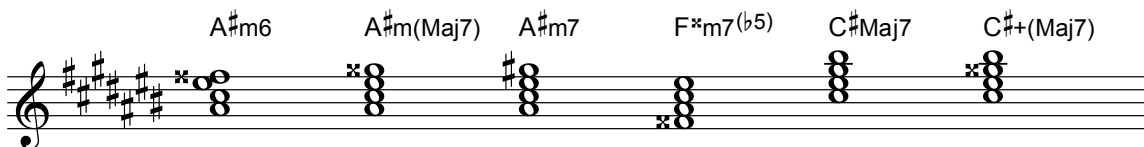
E7(b<sup>9</sup>)    G<sup>#</sup>dim7



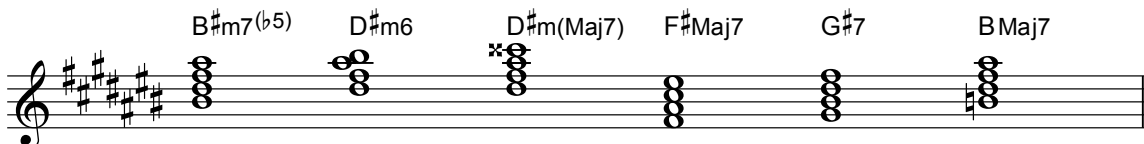
Key of A# Minor



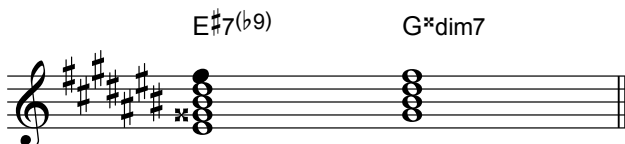
Tonic Chord



Sub Dominant Chord



Dominant Chord



Key of Bb Minor

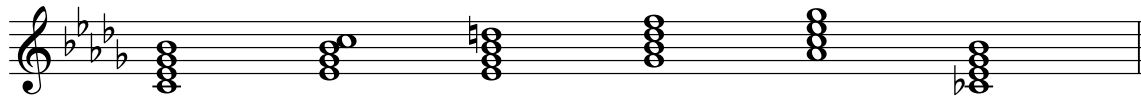


Tonic Chord



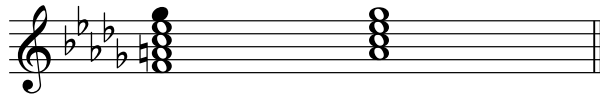
Sub Dominant Chord

Cm7(b5) Ebm6 Ebm(Maj7) GbMaj7 Ab7 CbMaj7

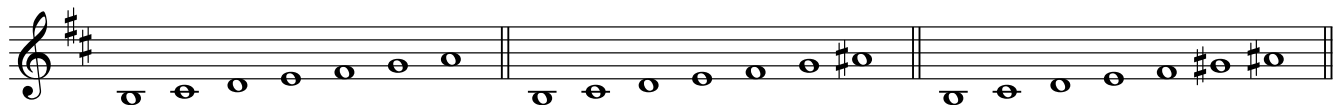


Dominant Chord

F7(b9) Adim7

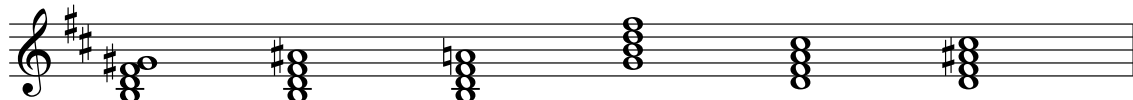


Key of B Minor




Tonic Chord

Bm6 Bm(Maj7) Bm7 G#m7(b5) DMaj7 D+(Maj7)



Sub Dominant Chord

C#m7(b5) Em6 Em(Maj7) GMaj7 A7 CMaj7



Dominant Chord

F#7(b9) A#dim7

